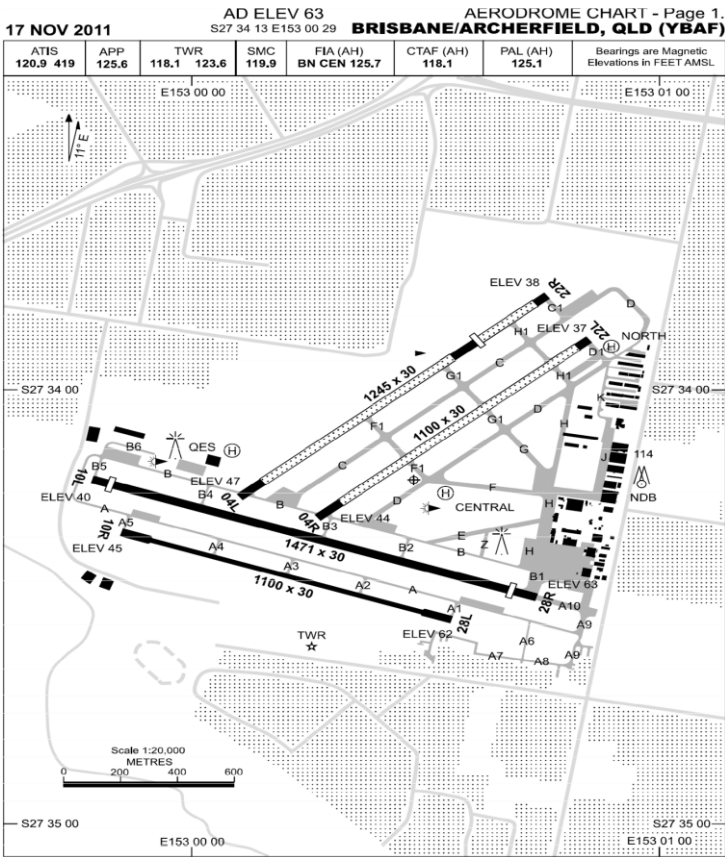


**TAXI & DEPARTURE RADIO**



ATIS (120.9)	
<b>TERMINAL INFORMATION</b>	
RUNWAY (Number (L/R))	
RUNWAY FREQUENCY	
WIND (DIRECTION/SPEED)	
CLOUD (QTY / HEIGHT)	
TEMP	
QNH	
<b>TAXI CALL</b>	
GROUND FREQ (119.9)	
ARCHER GROUND	
TYPE	
CALLSIGN	
LOCATION	
DUAL/SOLO/POB	
RECEIVED	
DEPARTURE (DIRECTION or CIRCUITS)	
REQUEST	
<b>READBACK</b>	
TAXI WAY	
SPECIFIC INSTRUCTIONS	
HOLDING POINT	
RUNWAY FOR DEPARTURE	
CALL SIGN	
<b>RUNWAY READY</b>	
ARCHER TOWER (Runway FREQ)	
CALLSIGN	
READY	
RUNWAY	
DEPARTING (DIRECTION or CIRCUITS)	

**INBOUND RADIO**

ATIS (120.9)	
<b>TERMINAL INFORMATION</b>	
RUNWAY (Number (L/R))	
RUNWAY FREQUENCY	
WIND (DIRECTION/SPEED)	
CLOUD (QTY / HEIGHT)	
TEMP	
QNH	
<b>INBOUND CALL</b>	
TOWER FREQ (Tune to Appropriate FREQ)	
ARCHER TOWER	
TYPE	
CALLSIGN	
LOCATION	
MAINTAINING X, XXX Ft	
INBOUND	
RECEIVED	
<b>READBACK</b>	
REPORT	
SPECIFIC POINT	
CALL SIGN	
<b>REPORT</b>	
TOWER FREQ	
ARCHER TOWER	
CALLSIGN	
SPECIFIC POINT	

**CIRCUIT RADIO**

<b>DOWNWIND CALL</b>	
CALLSIGN	
DOWNWIND RWY (L/R)	
TOUCH'N'GO / FULLSTOP	
<b>READBACK</b>	
NUMBER IN SEQUENCE	
OR	
CLEARED (TOUCH & GO / FULL STOP)	
RWY -- (L/R)	
CALLSIGN	

**AFTER LANDING**

<b>GROUND FREQ (119.9)</b>	
ARCHER GROUND	
CALLSIGN	
REQUEST TAXI FOR	
LOCATION	
<b>READBACK</b>	
CLEARED TAXI TO	
SPECIFIC POINT	
CALL SIGN	